

CUTTING HEAD

400-836-8816

Intelligence making future world

ShangHai HongMai Mechanical&Electrical Technology Co.,LTD
RM336-338 A Building,No.6785,ZhongChun RD,ShangHai
Tax payer identification code 91310117055866362T
TEL: 021-6728 9266 FAX: 021-6728 9277 -
Mob(WeChat):13916120123

CONTENTS

CUTTING HEAD

Company Introduction

About us	00
Company History	00
Enterprise Vision	00

Product introduction

3D Cutting Head	01
25D Cutting Head	03
Zoom Smart Cutting Head	05
Auto Focus Fiber Laser Cutting Head	07
Manual Focus Fiber Laser Cutting Head	12
Auto Focus Fiber Laser Cutting Head.....	16
Small Power Fiber Laser Cutting Head	19
Anticollision Device.....	21
Optic Lens.....	22
Ceramic Ring.....	23
Nozzle.....	24

Sample Display	33
Application field	34
Company culture	35



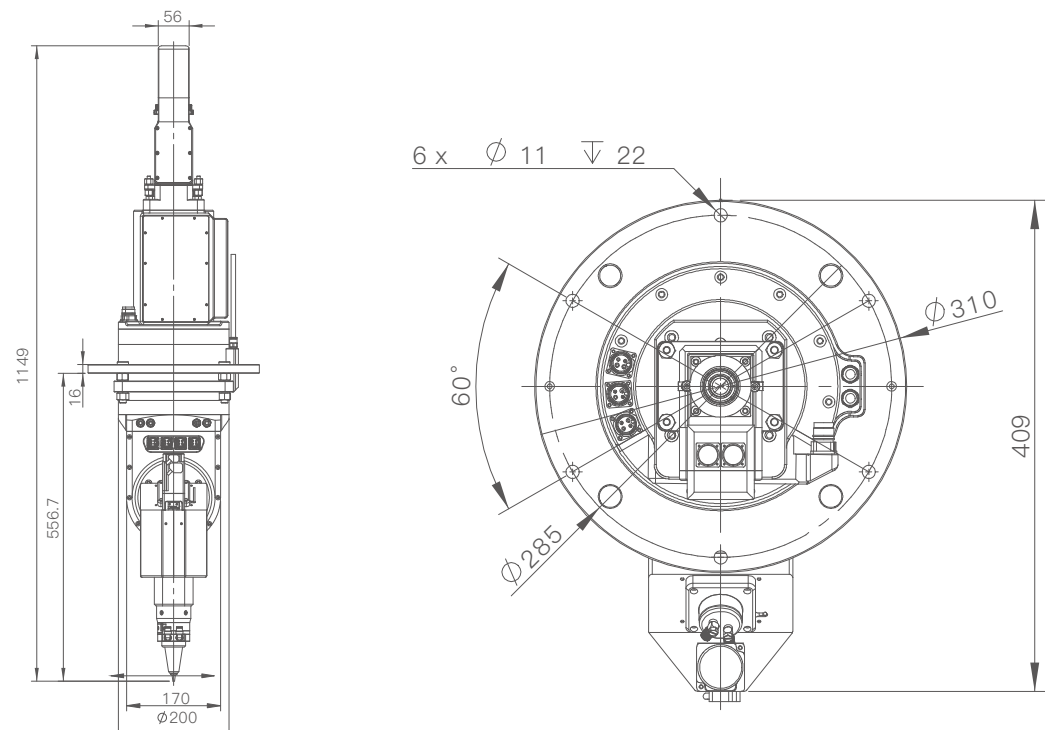
3D30

3D Cutting Head

PRODUCT FEATURES

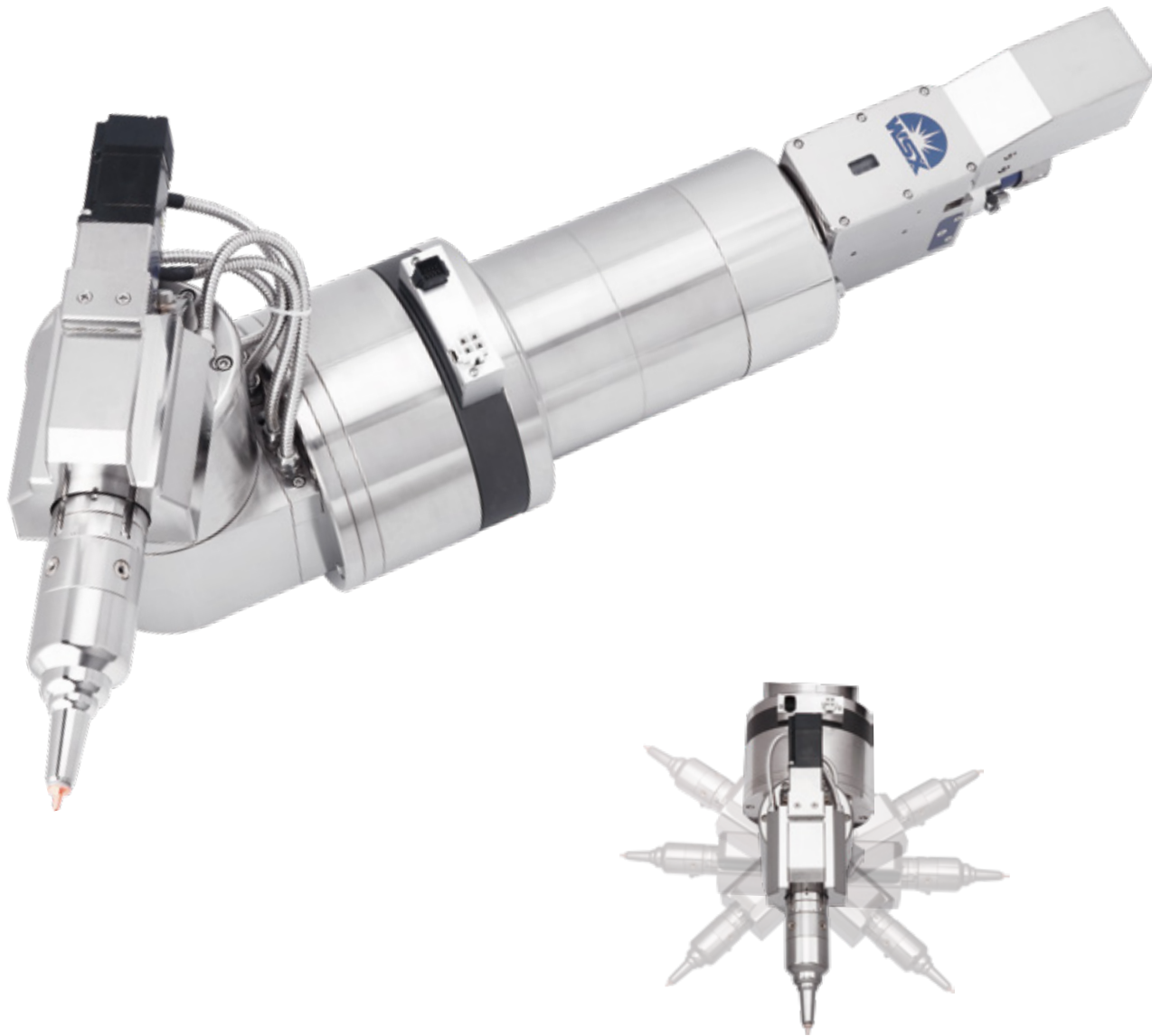
- ⚙ Using DD Motor to ensure stable and accurate long-term Operation.
- ⚙ Widely used to various three-dimensional processing application.
- ⚙ Fit for various laser sources
- ⚙ Anti-collision function
- ⚙ Max laser power ≤3000W

PRODUCT SIZE



PRODUCT FEATURES

Max Gas Pressure	25Bar	Horizontal Adjustment Rang	±1.5mm	Standard speed	80r/min
Collimating Focal length	100mm	Vertical Adjustment Range	±10mm	Gross weight	30kg
Focusing Focal Length	125mm/150mm	Range of Rotation Axis2	±135°	Effective Aperture	25mm
Position accuracy	<20arc sec	Range of Rotation Axis1	360°		



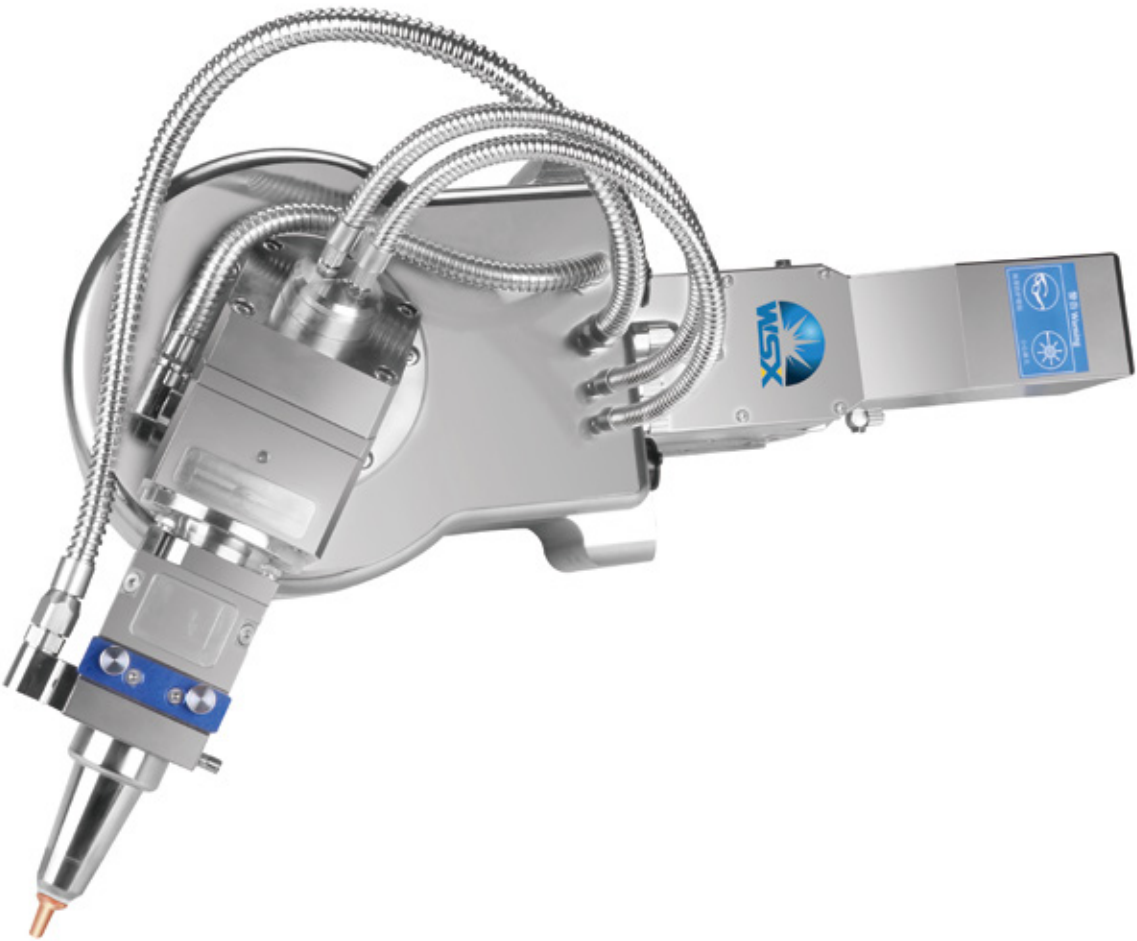
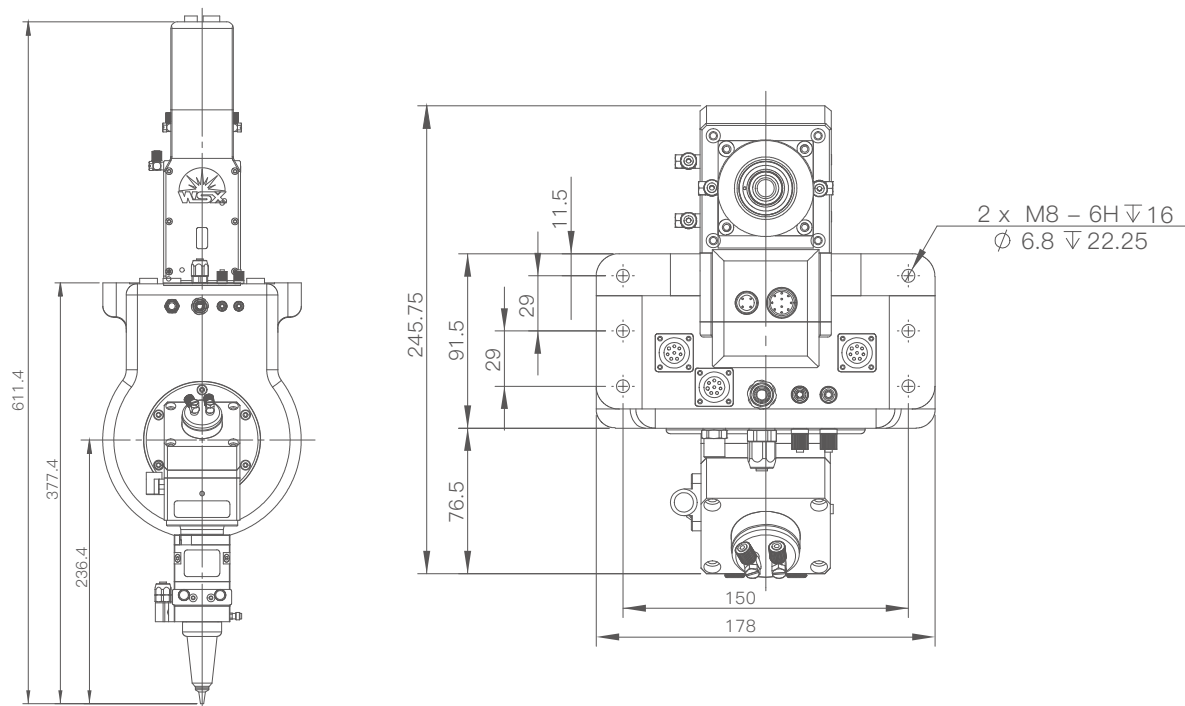
25D30

25D Cutting Head

PRODUCT FEATURES

- Using DD Motor to ensure stable and accurate long-term Operation.
- Widely used to various three-dimensional processing application.
- Fit for various laser sources
- Anti-collision function
- Max laser power ≤3000W

PRODUCT SIZE



PRODUCT FEATURES

Max Gas Pressure	25Bar	Horizontal Adjustment Rang	±1.5mm	Standard speed	80r/min
Collimating Focal length	100mm	Vertical Adjustment Range	±10mm	Gross weight	15kg
Focusing Focal Length	125mm/150mm	Range of Rotation Axis2	±135°	Effective Aperture	25mm
Position accuracy	<20arc sec				



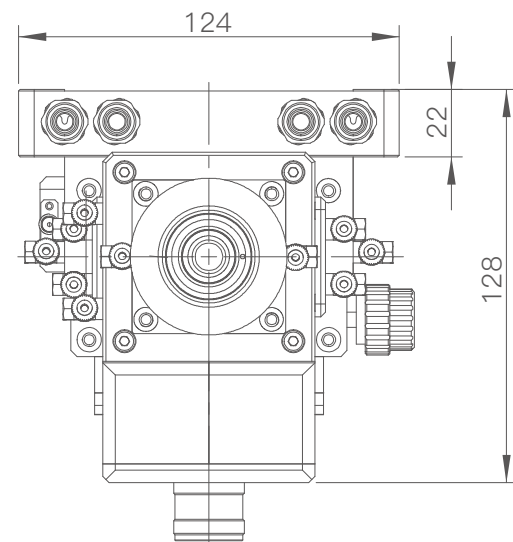
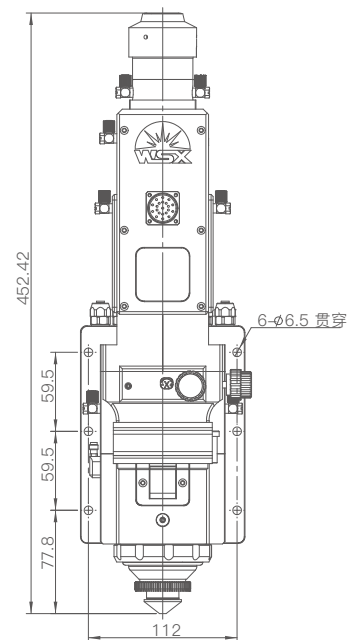
NC80

Zoom Smart Cutting Head

PRODUCT FEATURES

- ⚙ This cutting head has a strong advantage in the application of high power large format fiber laser cutting.
- ⚙ The internal structure of the laser head is completely sealed to avoid dust contamination on the optical part.
- ⚙ This laser head adopts two-point alignment, and the focusing is driven by imported motor, which greatly improves the efficiency of piercing.
- ⚙ The protective window is installed in cartridge, and is convenient to replace.
- ⚙ Auto-adjust the spot size.
- ⚙ Can be equipped with various kinds of laser source with QBH connector

PRODUCT SIZE



PRODUCT FEATURES

Max Gas Pressure	25Bar	Horizontal Adjustment Rang	±1.5mm	Effective Aperture	32mm
Collimating Focal length	100mm	Vertical Adjustment Range	±10mm	Gross weight	6.2kg
Focusing Focal Length	100mm/190mm	Adjustable spot ratio	30mm	Applicable power	≤9000W

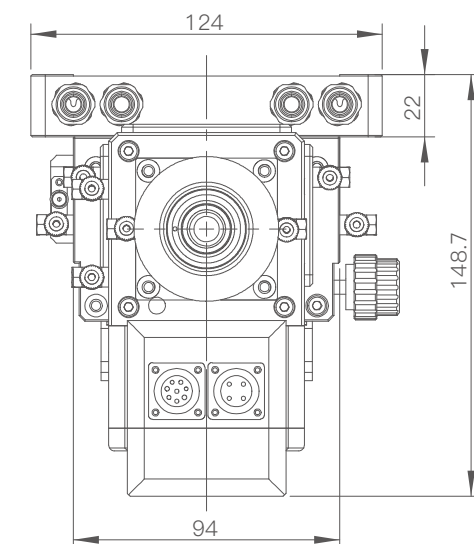
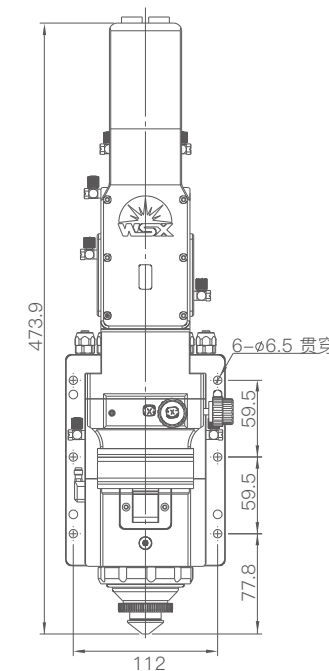
NC60

Auto Focus Fiber Laser Cutting Head

PRODUCT FEATURES

- ⚙ This cutting head has a strong advantage in the application of medium power large format fiber laser cutting.
- ⚙ This cutting head adopts elbow structure design. The internal structure is completely sealed to avoid dust contamination on the optical part.
- ⚙ This laser head adopts two-point alignment, and the focusing is adjusted by cam structure accurately and conveniently.
- ⚙ The protective window is installed in cartridge, and is convenient to replace.
- ⚙ Can be equipped with various kinds of laser source with QBH connector.

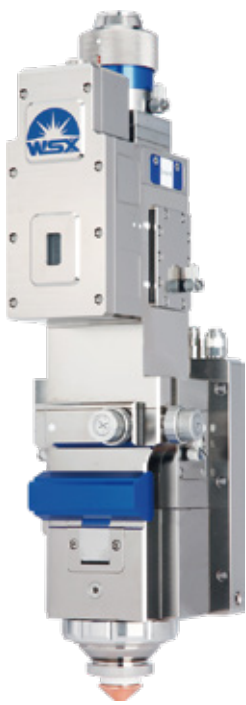
PRODUCT SIZE



PRODUCT FEATURES

Max Gas Pressure	25Bar	Horizontal Adjustment Rang	±1.5mm	Effective Aperture	32mm
Collimating Focal length	100mm	Vertical Adjustment Range	±10mm	Gross weight	7.3kg
Focusing Focal Length	100mm/190mm	Applicable power	≤9000W		





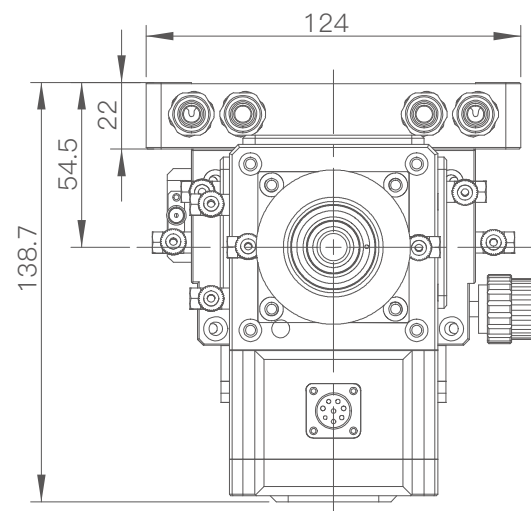
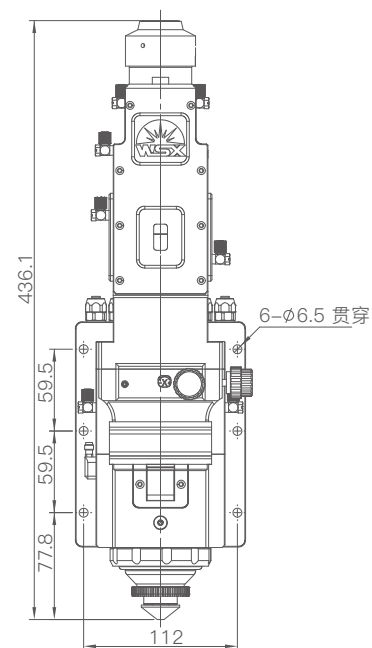
NC60B

光纤自动调焦切割头

PRODUCT FEATURES

- ✦ This cutting head has a strong advantage in the application of high power large format fiber laser cutting.
- ✦ The internal structure of the laser head is completely sealed to avoid dust contamination on the optical part.
- ✦ This laser head adopts two-point alignment, and the focusing is driven by imported motor, which greatly improves the efficiency of piercing.
- ✦ The protective window is installed in cartridge, and is convenient to replace.
- ✦ Can be equipped with various kinds of laser source with QBH connector.

PRODUCT SIZE



PRODUCT FEATURES

Max Gas Pressure	25Bar	Horizontal Adjustment Rang	±1.5mm	Effective Aperture	32mm
Collimating Focal length	100mm	Vertical Adjustment Range	±10mm	Gross weight	6.7kg
Focusing Focal Length	150mm/190mm	Applicable power	≤6000W		

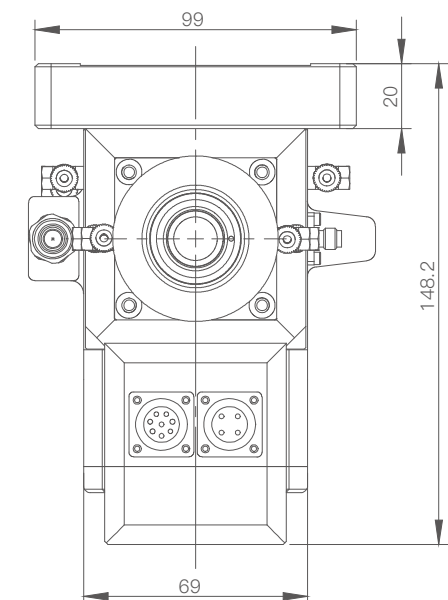
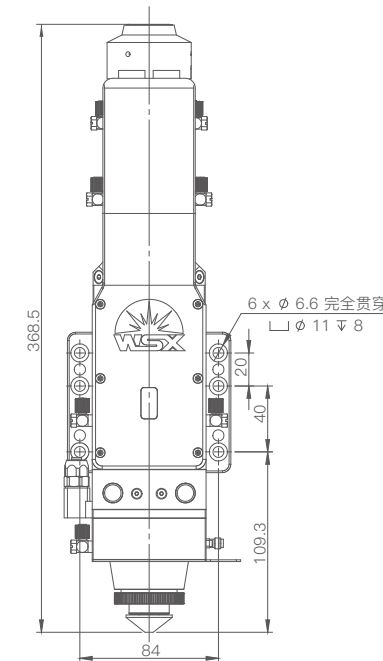
NC30

光纤自动调焦切割头

PRODUCT FEATURES

- ✦ This cutting head has a strong advantage in the application of high power large format fiber laser cutting.
- ✦ The internal structure of the laser head is completely sealed to avoid dust contamination on the optical part.
- ✦ This laser head adopts two-point alignment, and the focusing is driven by imported motor, which greatly improves the efficiency of piercing.
- ✦ The protective window is installed in cartridge, and is convenient to replace.
- ✦ Can be equipped with various kinds of laser source with QBH connector.

PRODUCT SIZE



PRODUCT FEATURES

Max Gas Pressure	25Bar	Horizontal Adjustment Rang	±1.5mm	Effective Aperture	25mm
Collimating Focal length	75mm/100mm	Vertical Adjustment Range	±10mm	Gross weight	5.1kg
Focusing Focal Length	125mm/150mm/190mm	Applicable power	≤3000W		



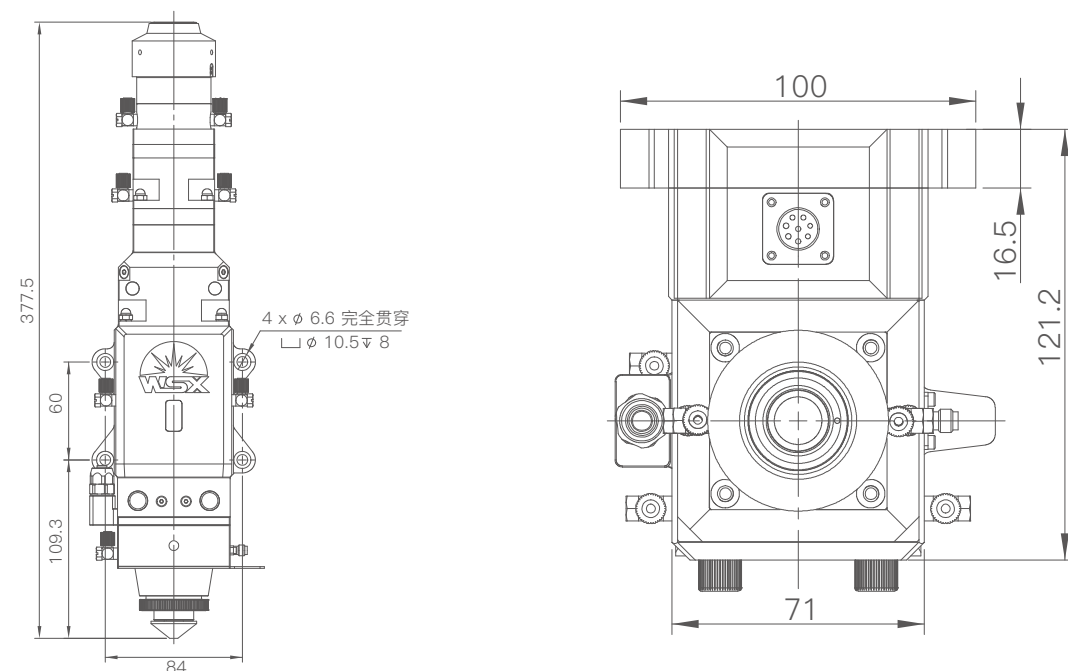
NC30B

Auto Focus Fiber Laser Cutting Head

PRODUCT FEATURES

- ⚙ This cutting head has a strong advantage in the application of high power large format fiber laser cutting.
- ⚙ The internal structure of the laser head is completely sealed to avoid dust contamination on the optical part.
- ⚙ This laser head adopts two-point alignment, and the focusing is driven by imported motor, which greatly improves the efficiency of piercing.
- ⚙ The protective window is installed in cartridge, and is convenient to replace.
- ⚙ Can be equipped with various kinds of laser source with QBH connector.

PRODUCT SIZE



PRODUCT FEATURES

Max Gas Pressure	25Bar	Horizontal Adjustment Rang	$\pm 1.5\text{mm}$	Effective Aperture	25mm
Collimating Focal length	75mm/100mm	Vertical Adjustment Range	$\pm 10\text{mm}$	Gross weight	4.4kg
Focusing Focal Length	125mm/150mm/190mm			Applicable power	$\leq 3000\text{W}$

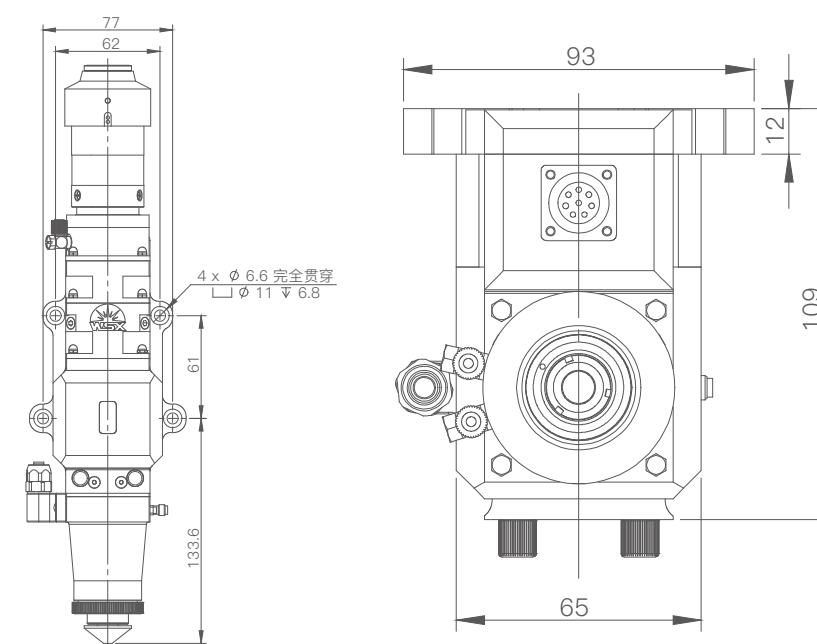
NC12

光纤自动调焦切割头

PRODUCT FEATURES

- ⚙ 此切割头在中功率大幅面光纤激光切割应用方面有很强优势。
- ⚙ 激光头内部结构完全密封，可避免光学部分受到灰尘污染。
- ⚙ 激光头采用两点对中调节，调焦采用进口电机驱动，在穿孔方面效率显著提升。
- ⚙ 保护镜片采用抽屉式安装，更换方便。
- ⚙ 自动调节光斑大小。
- ⚙ 可配各种带QBH接头激光器。

PRODUCT SIZE



PRODUCT FEATURES

Max Gas Pressure	25Bar	Horizontal Adjustment Rang	$\pm 1.5\text{mm}$	Effective Aperture	20mm
Collimating Focal length	75mm/100mm	Vertical Adjustment Range	$\pm 8\text{mm}$	Gross weight	2.8kg
Focusing Focal Length	125mm/150mm	Applicable power	$\leq 1000\text{W}$		





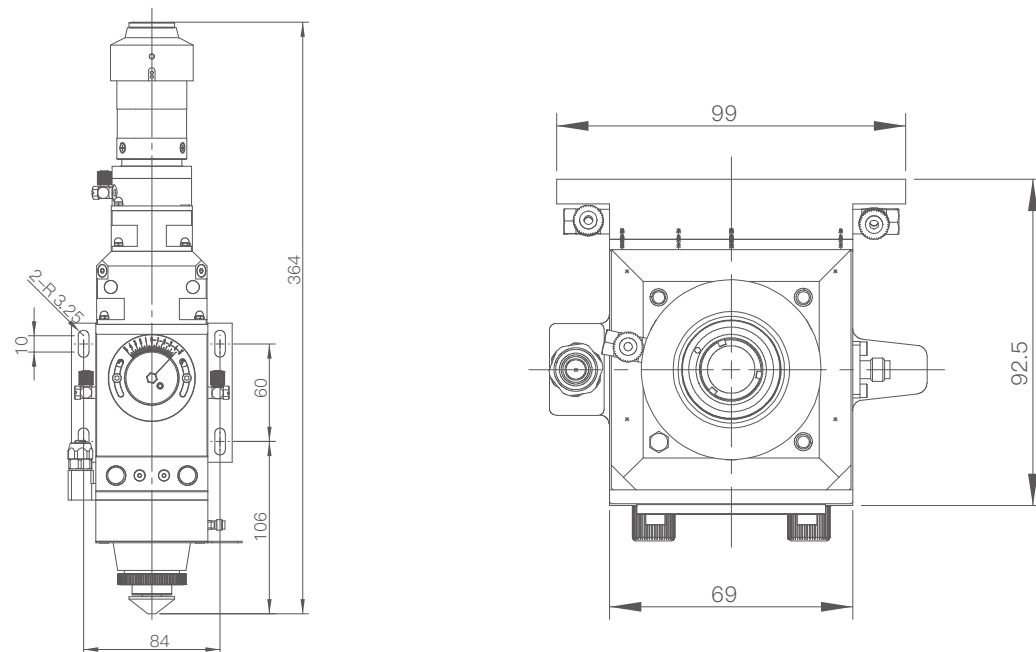
KC15

Fiber Laser Cutting Head

PRODUCT FEATURES

- ⚙ This cutting head has a strong advantage in the application of medium power large format fiber laser cutting.
- ⚙ The internal structure of the laser head is completely sealed to avoid dust contamination on the optical part.
- ⚙ This laser head adopts two-point alignment, and the focusing is adjusted by cam structure accurately and conveniently.
- ⚙ The protective window is installed in cartridge, and is convenient to replace.
- ⚙ Can be equipped with various kinds of laser source with QBH connector.

PRODUCT SIZE



PRODUCT FEATURES

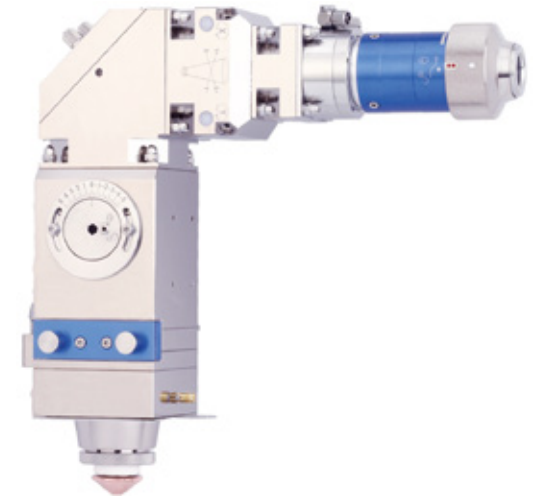
Max Gas Pressure	25Bar	Horizontal Adjustment Rang	±1.5mm	Effective Aperture	25mm
Collimating Focal length	75mm/100mm	Vertical Adjustment Range	±5mm	Gross weight	3.3kg
Focusing Focal Length	125mm/150mm/200mm			Applicable power	≤2000W

KC15F

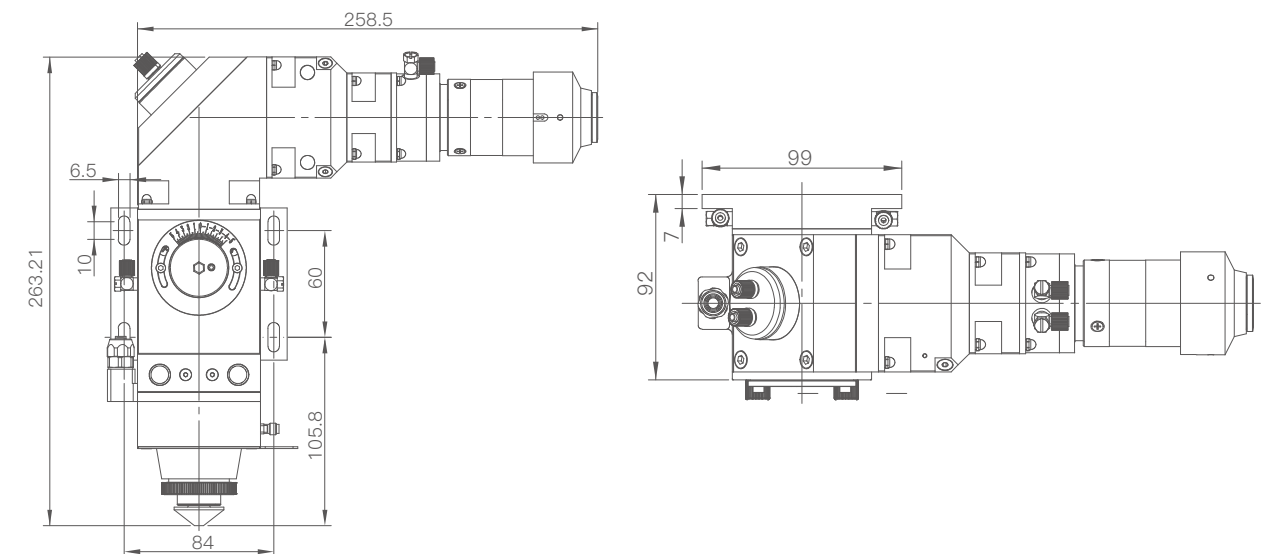
Fiber Laser Cutting Head

PRODUCT FEATURES

- ⚙ This cutting head has a strong advantage in the application of medium power large format fiber laser cutting.
- ⚙ This cutting head adopts elbow structure design. The internal structure is completely sealed to avoid dust contamination on the optical part.
- ⚙ This laser head adopts two-point alignment, and the focusing is adjusted by cam structure accurately and conveniently.
- ⚙ The protective window is installed in cartridge, and is convenient to replace.
- ⚙ Can be equipped with various kinds of laser source with QBH connector.



PRODUCT SIZE



PRODUCT FEATURES

Max Gas Pressure	25Bar	Horizontal Adjustment Rang	±1.5mm	Effective Aperture	25mm
Collimating Focal length	75mm/100mm	Vertical Adjustment Range	±5mm	Gross weight	4.2kg
Focusing Focal Length	125mm/150mm/200mm			Applicable power	≤2000W



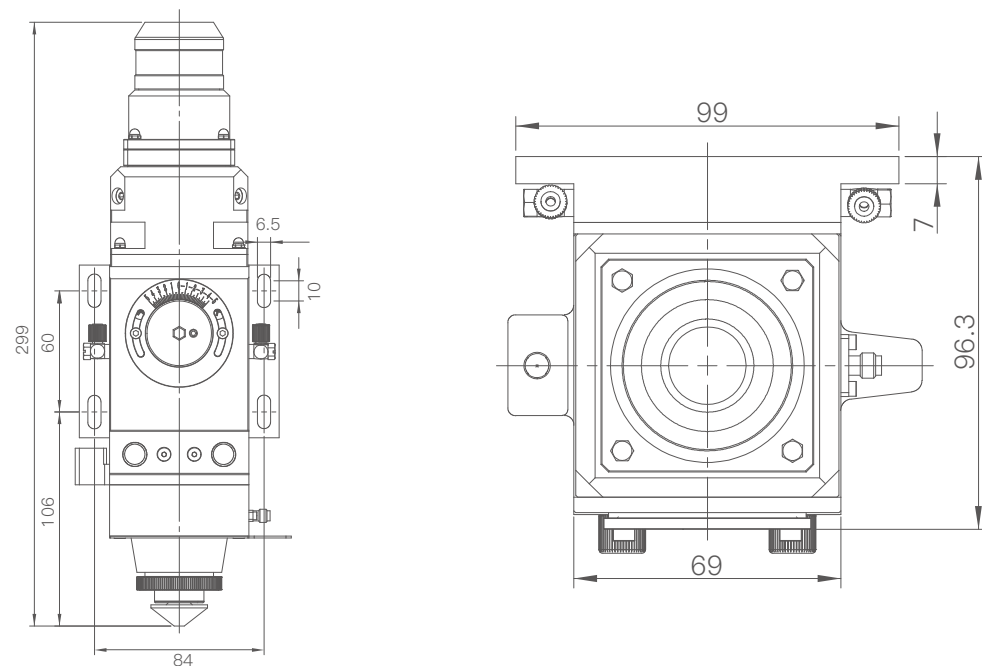
KC15S

Fiber Laser Cutting Head

PRODUCT FEATURES

- ⚙ This cutting head has a strong advantage in the application of medium power large format fiber laser cutting.
- ⚙ This cutting head adopts elbow structure design. The internal structure is completely sealed to avoid dust contamination on the optical part.
- ⚙ Focusing is adjusted by cam structure accurately and conveniently.
- ⚙ The protective window is installed in cartridge, and is convenient to replace.
- ⚙ Can be equipped with various kinds of laser source with QCS connector.

PRODUCT SIZE



PRODUCT FEATURES

Max Gas Pressure	25Bar	Horizontal Adjustment Rang	±1.5mm	Effective Aperture	25mm
Focusing Focal Length	125mm/150mm/200mm	Vertical Adjustment Range	±5mm	Gross weight	2.8kg
Applicable power	≤2000W				

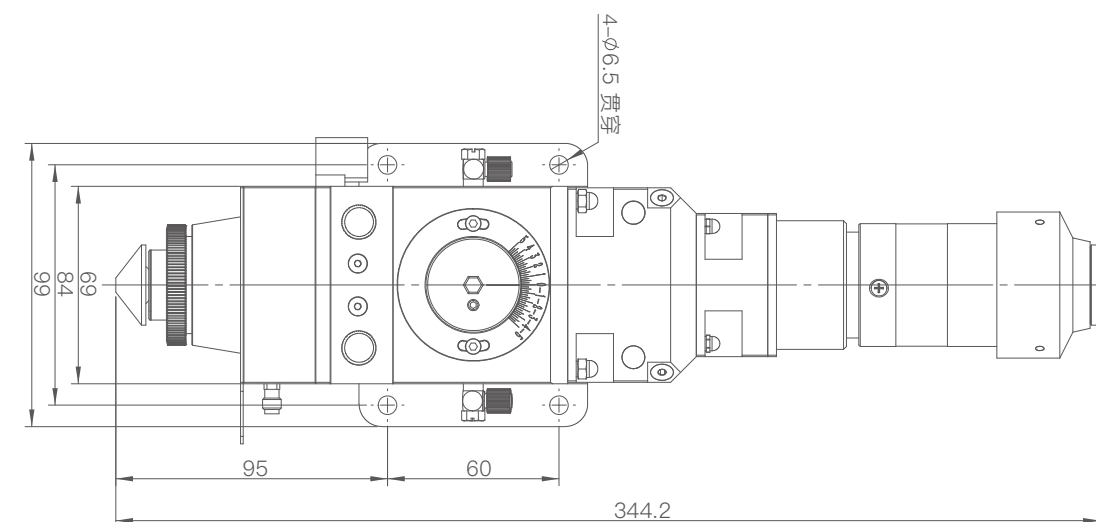
KC13

Fiber Laser Cutting Head

PRODUCT FEATURES

- ⚙ This cutting head has a strong advantage in the application of medium power large format fiber laser cutting.
- ⚙ This cutting head adopts elbow structure design. The internal structure is completely sealed to avoid dust contamination on the optical part.
- ⚙ This laser head adopts two-point alignment, and the focusing is adjusted by cam structure accurately and conveniently.
- ⚙ The protective window is installed in cartridge, and is convenient to replace.
- ⚙ Can be equipped with various kinds of laser source with QCS connector.

PRODUCT SIZE



PRODUCT FEATURES

Max Gas Pressure	25Bar	Horizontal Adjustment Rang	±1.5mm	Effective Aperture	25mm
Collimating Focal length	75mm/100mm	Vertical Adjustment Range	±5mm	Gross weight	3.1kg
Focusing Focal Length	125mm/150mm/200mm			Applicable power	≤2000W





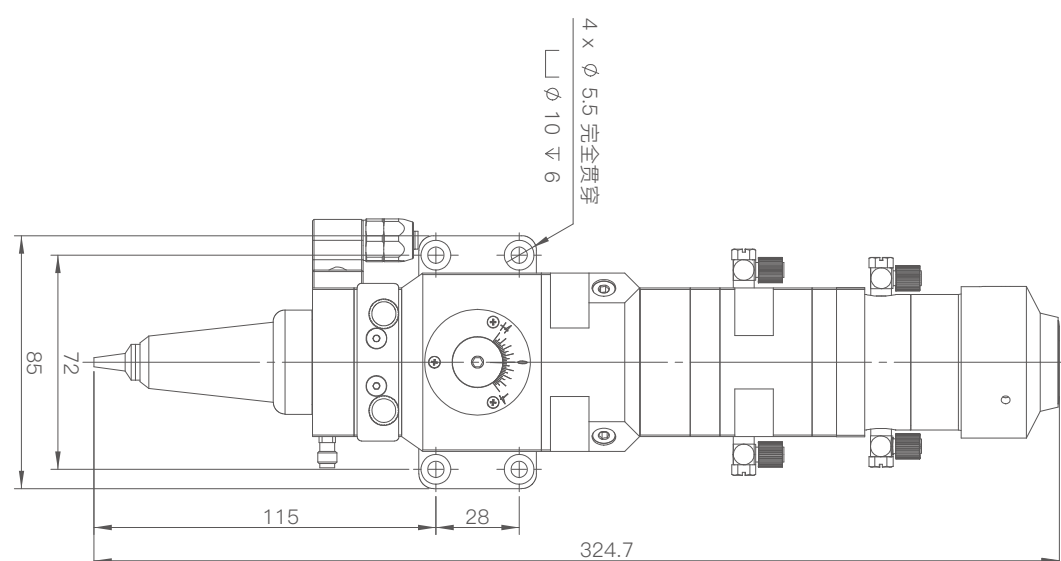
SW20

3D Fiber Laser Cutting Head

PRODUCT FEATURES

- ⚙ This cutting head has a strong advantage in the application of medium power large format fiber laser cutting.
- ⚙ The internal structure is completely sealed to avoid dust contamination on the optical part.
- ⚙ This laser head adopts two-point alignment, and the focusing is adjusted by cam structure accurately and conveniently.
- ⚙ The protective window is installed in cartridge, and is convenient to replace.
- ⚙ Can be equipped with various kinds of laser source with QBH connector.
- ⚙ Overall lightweight, compact structure, suitable for using in mechanical hands.

PRODUCT SIZE



PRODUCT FEATURES

Max Gas Pressure	25Bar	Horizontal Adjustment Rang	±1.5mm	Effective Aperture	25mm
Collimating Focal length	75mm/100mm	Vertical Adjustment Range	±4mm	Gross weight	2.1kg
Focusing Focal Length	125mm/150mm	Applicable power	≤2000W		

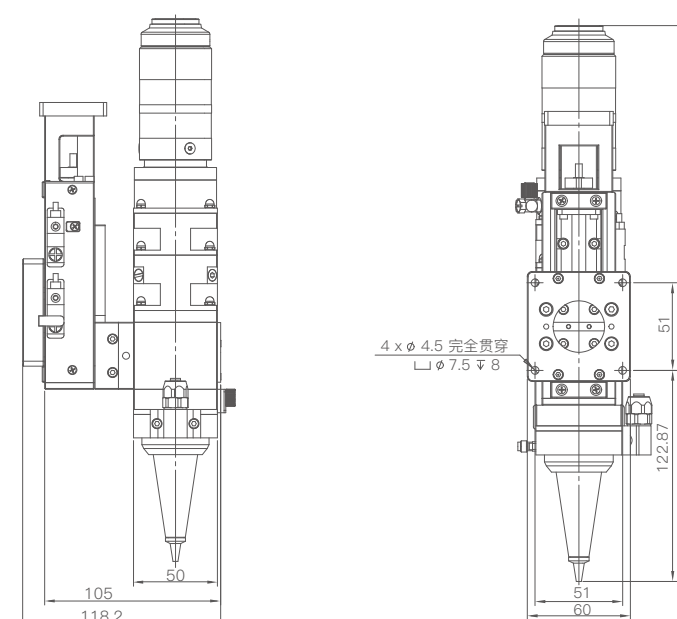
SW15

3D Fiber Laser Cutting Head

PRODUCT FEATURES

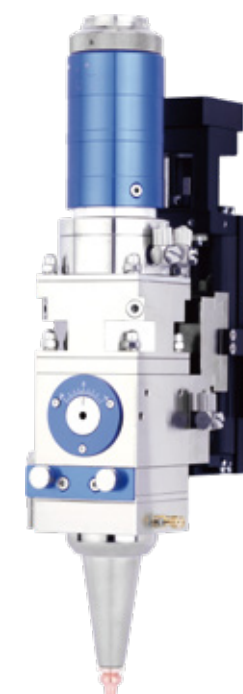
- ⚙ This cutting head has a strong advantage in the application of medium power small format fiber laser cutting.
- ⚙ This cutting head adopts elbow structure design. The internal structure is completely sealed to avoid dust contamination on the optical part.
- ⚙ This laser head adopts two-point alignment, and the focusing is adjusted by cam structure accurately and conveniently.
- ⚙ The protective window is installed in cartridge, and is convenient to replace.
- ⚙ Can be equipped with various kinds of laser source with QCS connector.
- ⚙ Overall lightweight, compact structure, suitable for using in mechanical hands.

PRODUCT SIZE



PRODUCT FEATURES

Max Gas Pressure	25Bar	Horizontal Adjustment Rang	±1.5mm	Effective Aperture	20mm
Collimating Focal length	75mm/100mm	Vertical Adjustment Range	±4mm	Gross weight	2.4kg
Focusing Focal Length	125mm/150mm	Applicable power	≤1200W		





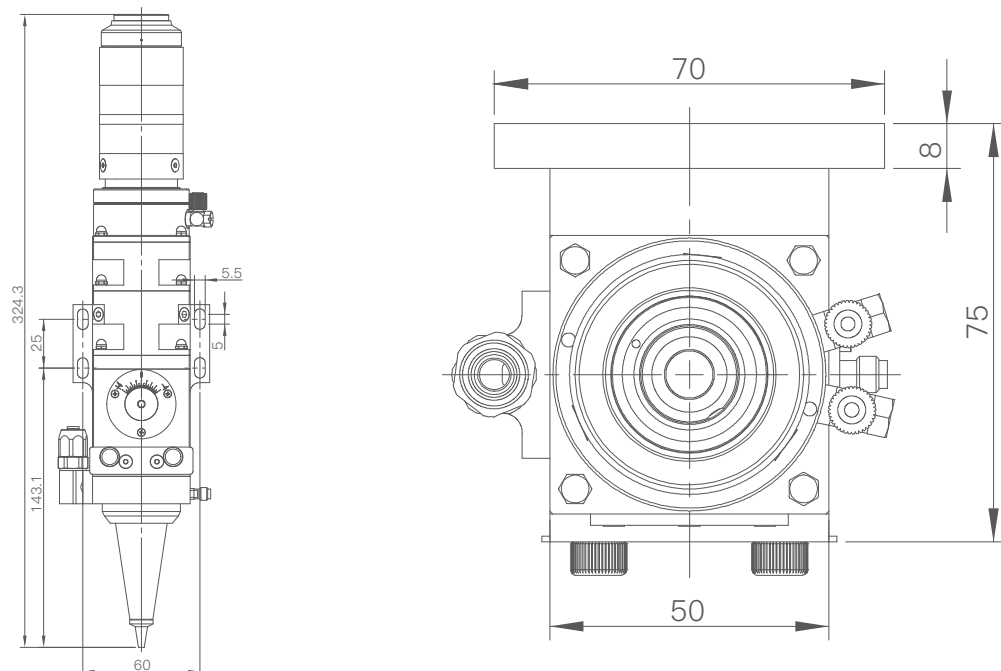
SW15B

3D Fiber Laser Cutting Head

PRODUCT FEATURES

- ⚙️ 此切割头在中小功率小幅面光纤激光切割应用方面有很强优势。
- ⚙️ 激光头内部结构完全密封，可避免光学部分受到灰尘污染。
- ⚙️ 调焦采用凸轮结构,调节精确方便。
- ⚙️ 保护镜片采用抽屉式安装，更换方便。
- ⚙️ 可配各种带QCS接头激光器。
- ⚙️ 整体轻盈，结构紧凑，适合在机械手上使用。

PRODUCT SIZE



PRODUCT FEATURES

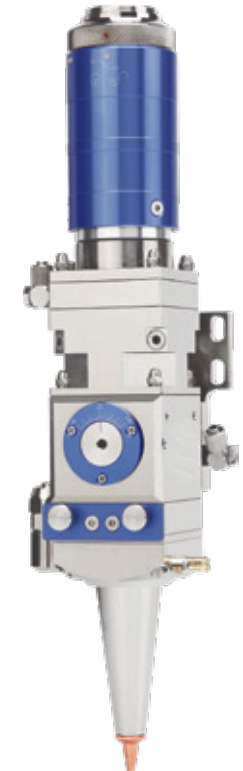
Max Gas Pressure	25Bar	Horizontal Adjustment Rang	±1.5mm	Effective Aperture	20mm
Collimating Focal length	75mm/100mm	Vertical Adjustment Range	±4mm	Gross weight	1.7kg
Focusing Focal Length	125mm/150mm	Applicable power	≤1200W		

SW15E

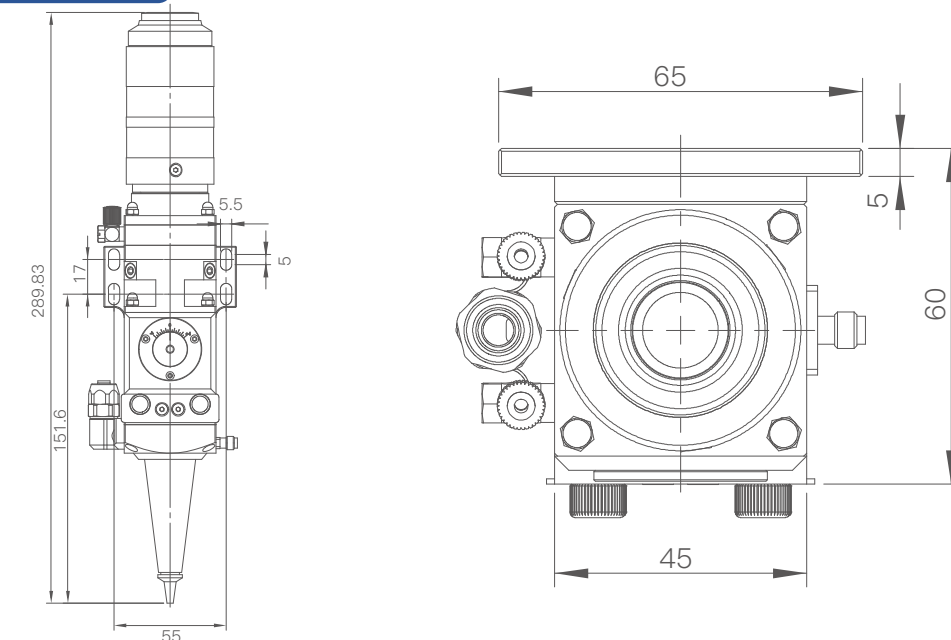
3D Fiber Laser Cutting Head

PRODUCT FEATURES

- ⚙️ This cutting head has a strong advantage in the application of medium power small format fiber laser cutting.
- ⚙️ The internal structure of the laser head is completely sealed to avoid dust contamination on the optical part.
- ⚙️ This laser head adopts two-point alignment, and the focusing is adjusted by cam structure accurately and conveniently.
- ⚙️ The protective window is installed in cartridge, and is convenient to replace.
- ⚙️ Can be equipped with various kinds of laser source with QBH connector.
- ⚙️ Overall lightweight, compact structure,with a slide screw, suitable for using in mechanical hands.



PRODUCT SIZE



PRODUCT FEATURES

Max Gas Pressure	25Bar	Horizontal Adjustment Rang	±1.5mm	Effective Aperture	20mm
Collimating Focal length	75mm/100mm	Vertical Adjustment Range	±4mm	Gross weight	1.0kg
Focusing Focal Length	125mm/150mm	Applicable power	≤1200W		



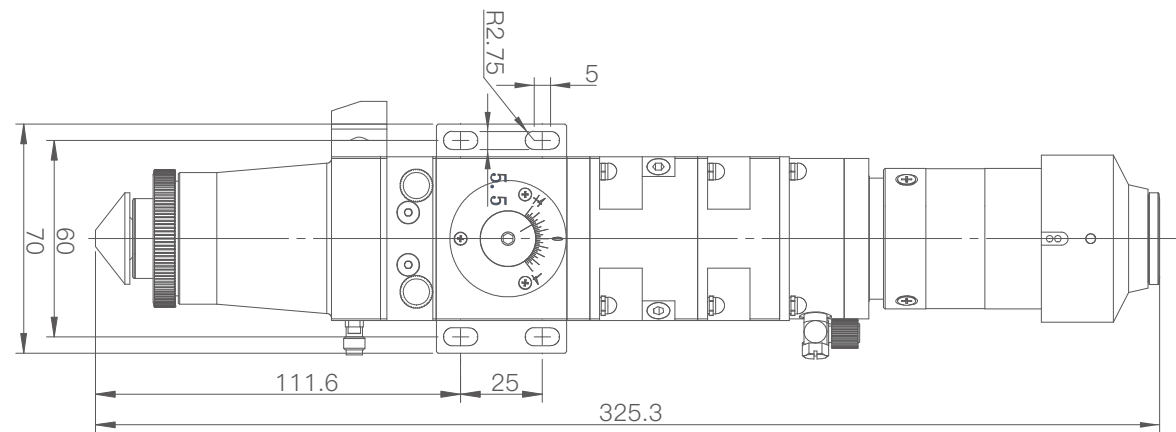
MN15

Small Power Fiber Laser Cutting Head

PRODUCT FEATURES

- ⚙ This cutting head has a strong advantage in the application of small power small format fiber laser cutting.
- ⚙ The internal structure of the laser head is completely sealed to avoid dust contamination on the optical part.
- ⚙ This laser head adopts two-point alignment, and the focusing is adjusted by cam structure accurately and conveniently.
- ⚙ The protective window is installed in cartridge, and is convenient to replace.
- ⚙ Can be equipped with various kinds of laser source with QBH connector.

PRODUCT SIZE



PRODUCT FEATURES

Max Gas Pressure	25Bar	Horizontal Adjustment Rang	±1.5mm	Effective Aperture	20mm
Collimating Focal length	75mm/100mm	Vertical Adjustment Range	±4mm	Gross weight	1.7kg
Focusing Focal Length	125mm/125mm/150mm			Applicable power	≤1000W

MN15S

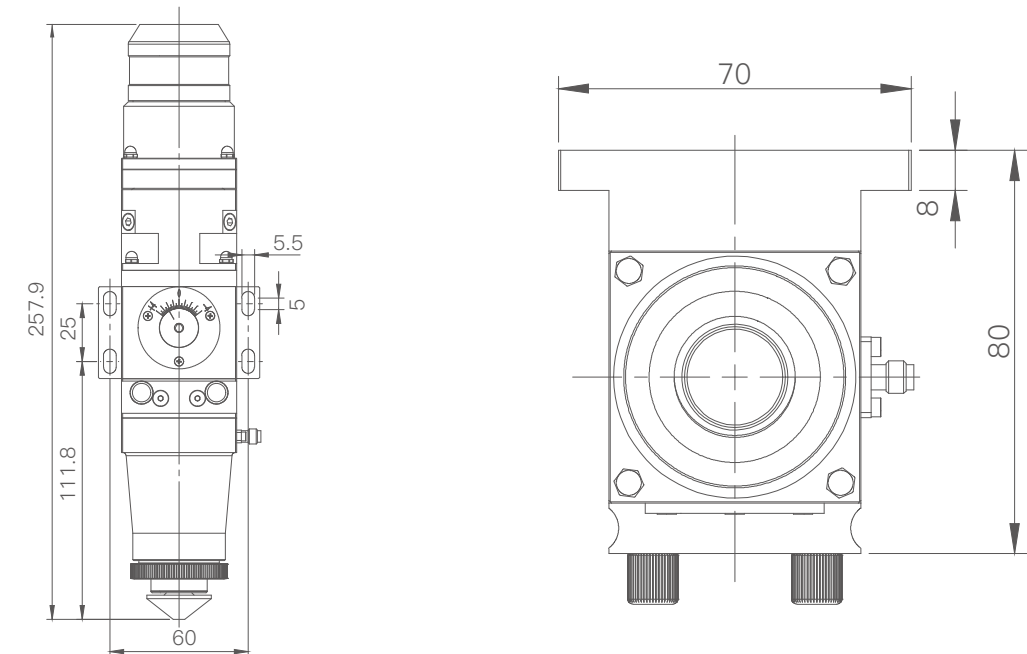
Small Power Fiber Laser Cutting Head

PRODUCT FEATURES

- ⚙ This cutting head has a strong advantage in the application of small power small format fiber laser cutting.
- ⚙ The internal structure of the laser head is completely sealed to avoid dust contamination on the optical part.
- ⚙ This laser head adopts two-point alignment, and the focusing is adjusted by cam structure accurately and conveniently.
- ⚙ The protective window is installed in cartridge, and is convenient to replace.
- ⚙ Can be equipped with various kinds of laser source with QBH connector.



PRODUCT SIZE



PRODUCT FEATURES

Max Gas Pressure	25Bar	Horizontal Adjustment Rang	±1.5mm	Effective Aperture	20mm
Focusing Focal Length	100mm/125mm/150mm	Vertical Adjustment Range	±5mm	Gross weight	2.8kg
Applicable power	≤1000W				

F100

Anticollision Device

PRODUCT FEATURES

- ⚙ Pneumatic booster provides protection against accidental effects and unexpected event loads on industrial robots and tools.
- ⚙ Through sensing industrial robots and tools working geometry due to overworked torsion, torque or compressed axial forces and other events, and send out collision signals.
- ⚙ When the collision occurs, the internal movement of the device causes the normally closed dry contact switch to open.
- ⚙ The switch circuit can be stopped by the monitor robot controller before damage occurs to the robot or tool.
- ⚙ The separated load threshold may be controlled to regulate the air pressure provided to the unit.
- ⚙ All devices provide axial (compression only), torsional and torque event protection.



PRODUCT FEATURES

Operating pressure	1.7–6.2Bar	Angle movement upper limit	±13°	Axial load upper limit	1713N
Working voltage	DC24V	Torsion load upper limit	1713N	Weight	0.58kg
Working current	125mA	Applicable power	≤1200W		

Optic Lens

Collimating Lens Component

The collimating lens component adopts precision machined gasket, locking ring combined with imported lens group to transform the transmission beam into collimated beam in the optical fiber with small volume and low loss.

WSX-JQ-JT-01



WSX-NC60-JT-03



Focusing Lens Component

The focusing lens component combines the crescent lens and the double convex lens to form the convex lens group, which can correct the spherical aberration, make the focused spot smaller, the energy more concentrated, and the cutting sharper.

WSX-NC60-JT-04



WSX-GQ-JT-02



Ceramic ring

It is made of imported ceramic materials by precision machining and has good brittleness and temperature adaptability.

WTC-01A



WTC-02

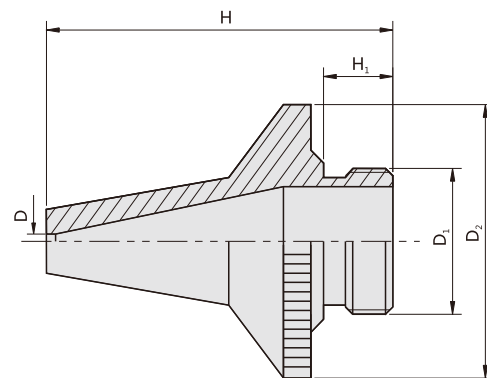


WTC-03



Nozzle

WMZK-D



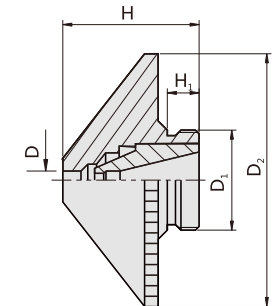
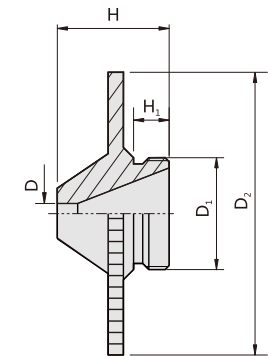
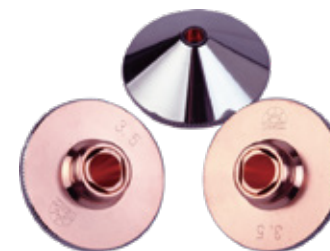
Type (Single)	øD	D ₁	D ₂	H	H ₁
WMZK-D-08	1.0	M5*0.5	6.9	12	2.5
WMZK-D-10	1.2				
WMZK-D-15	1.5				
WMZK-D-20	2.0				

Nozzle

WDZ-D



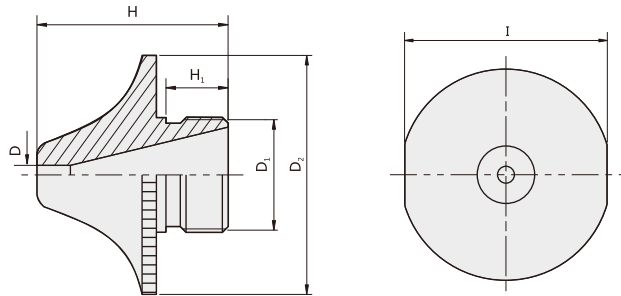
WDZ-S



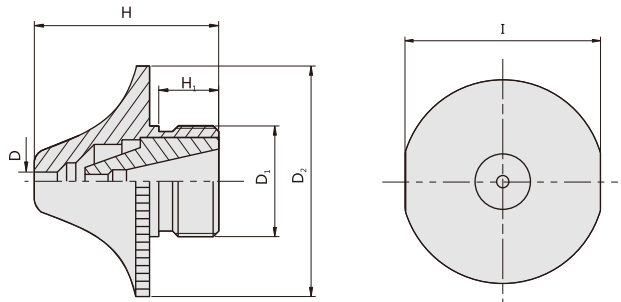
Material	Working Presser	WorkingTemperture	Installation Way		
copper	High Pressure Resistance	High Temperature	External Screw Thread Connection		
Type (Single)	øD	D ₁	D ₂	H	H ₂
WDZ-D-08	0.8	M11*0.75	27.8	11	3.5
WDZ-D-10	1.0				
WDZ-D-15	1.5				
WDZ-D-20	2.0				
WDZ-D-25	2.5				
WDZ-D-30	3.0				
WDZ-D-35	3.5				
WDZ-D-40	4.0				
Type (Double)	øD	D ₁	D ₂	H	H ₂
WDZ-S-08	0.8	M11*0.75	27.8	15	3.5
WDZ-S-10	1.0				
WDZ-S-15	1.5				
WDZ-S-20	2.0				
WDZ-S-25	2.5				
WDZ-S-30	3.0				
WDZ-S-35	3.5				
WDZ-S-40	4.0				

Nozzle

WAMD-D



WAMD-S



Material

copper

Working Presser

High Pressure Resistance

WorkingTemperature

High Temperature

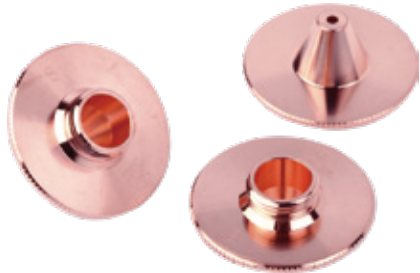
Installation Way

External Screw Thread Connection

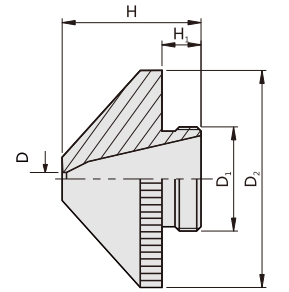
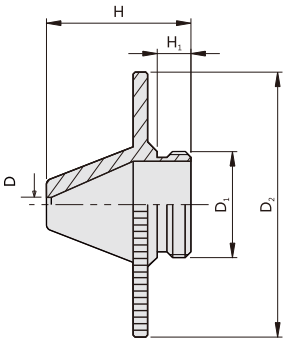
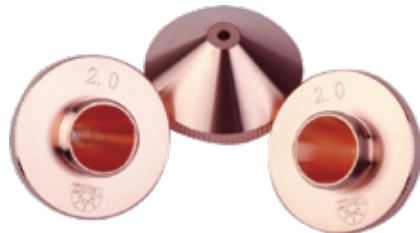
Type (Single)	øD	D ₁	D ₂	H	H ₁	I
WAMD-D-08	0.8	M12*1	25	20	6.5	24
WAMD-D-10	1.0					
WAMD-D-15	1.5					
WAMD-D-20	2.0					
WAMD-D-25	2.5					
WAMD-D-30	3.0					
Type (Double)	øD	D ₁	D ₂	H	H ₁	I
WAMD-S-08	0.8	M12*1	25	20	6.5	24
WAMD-S-10	1.0					
WAMD-S-15	1.5					
WAMD-S-20	2.0					
WAMD-S-25	2.5					
WAMD-S-30	3.0					

Nozzle

WGN-D



WASC-D



Material

copper

Working Presser

High Pressure Resistance

WorkingTemperature

High Temperature

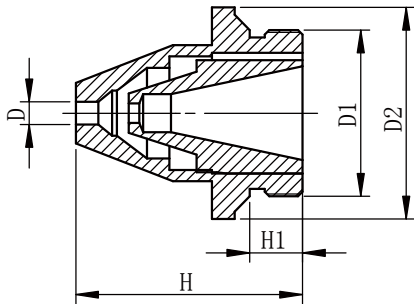
Installation Way

External Screw Thread Connection

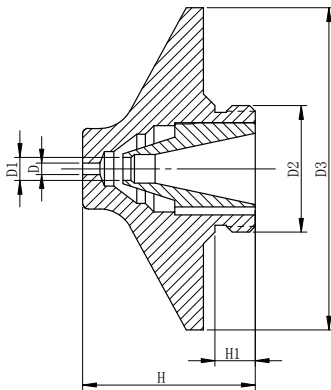
Type (Single)	øD	D ₁	D ₂	H	H ₂
WGN-D-08	0.8	M11*0.75	28	15	3.5
WGN-D-10	1.0				
WGN-D-15	1.5				
WGN-D-20	2.0				
WGN-D-25	2.5				
WGN-D-30	3.0				
WGN-D-35	3.5	M12*0.75	25	16	4.5
WGN-D-40	4.0				
WASC-D-08	0.8				
WASC-D-10	1.0				
WASC-D-15	1.5				
WASC-D-20	2.0				
WASC-D-25	2.5				
WASC-D-30	3.0				
WASC-D-35	3.5				
WASC-D-40	4.0				

Nozzle

SW-S



WNC-S



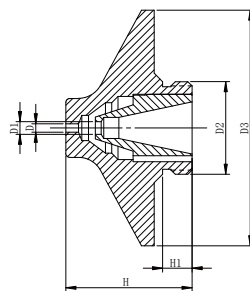
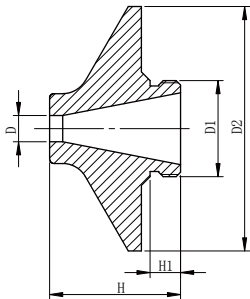
Material		Working Presser		WorkingTemperature		Installation Way	
copper		High Pressure Resistance		High Temperature		External Screw Thread Connection	
Type (Double)	øD	D ₁	D ₂	H	H ₁		
SW-S-15	1.5	M11*0.75	14	15	3.5		
SW-S-20	2.0						
Type (Double)	øD	D ₁	D ₂	D ₃	H	H ₁	
WNC-S-10	1.0	2.0	M11*0.75	28	15	3.5	
WNC-S-12	1.2						
WNC-S-15	1.5						
WNC-S-20	2.0						
WNC-S-25	2.5						
WNC-S-30	3.0						
WNC-S-35	3.5						
WNC-S-40	4.0						
WNC-S-45	4.5						
WNC-S-50	5.0						
WNC-S-55	5.5						
WNC-S-60	6.0						

Nozzle

WPCT-D



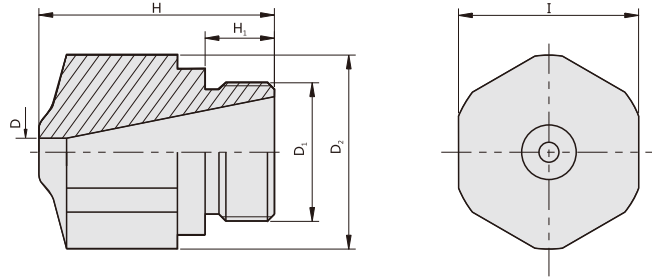
WPCT-S



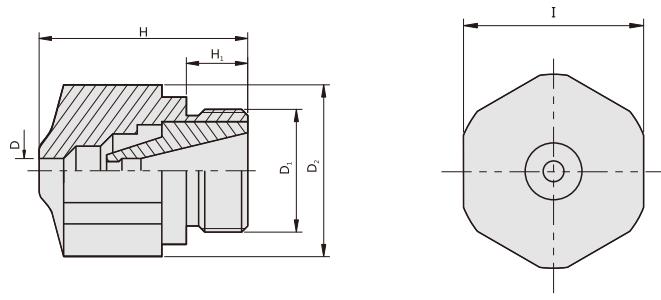
Material		Working Presser		WorkingTemperature		Installation Way	
copper		High Pressure Resistance		High Temperature		External Screw Thread Connection	
Type (Single)	øD	D ₁	D ₂	H	H ₁		
WPCT-D-08	0.8	M11*0.75	28	15	3.5		
WPCT-D-10	1.0						
WPCT-D-11	1.1						
WPCT-D-12	1.2						
WPCT-D-15	1.5						
WPCT-D-18	1.8						
WPCT-D-20	2.0						
WPCT-D-25	2.5						
WPCT-D-30	3.0						
WPCT-D-35	3.5						
WPCT-D-40	4.0						
WPCT-D-45	4.5						
WPCT-D-50	5.0						
Type (Double)	øD	D ₁	D ₂	D ₃	H	H ₁	
WPCT-S-10	1.0	1.5	M11*0.75	28	15	3.5	
WPCT-S-12	1.2						
WPCT-S-15	1.5						
WPCT-S-20	2.0						
WPCT-S-25	2.5						
WPCT-S-30	3.0						
WPCT-S-35	3.5						
WPCT-S-40	4.0						
WPCT-S-45	4.5						
WPCT-S-50	5.0						
WPCT-S-55	5.5						
WPCT-S-60	6.0						

Nozzle

WBC-D



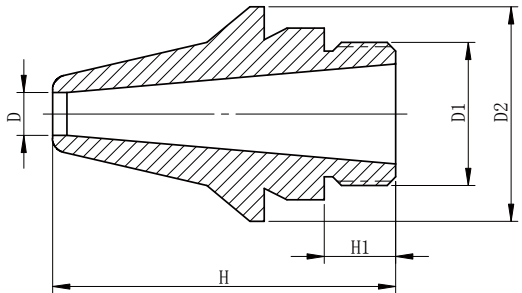
WBC-S



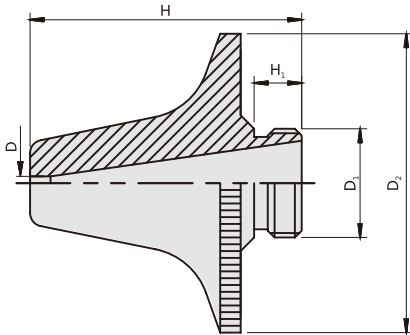
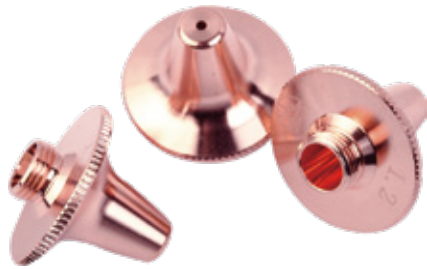
Material		Working Presser		WorkingTemperture		Installation Way	
copper		High Pressure Resistance		High Temperature		External Screw Thread Connection	
Type (Single)	øD	D ₁	D ₂	H	H ₁	I	
WBC-D-08	0.8	M10*0.5	14	17	5	13	
WBC-D-10	1.0						
WBC-D-15	1.5						
WBC-D-20	2.0						
WBC-D-25	2.5						
WBC-D-30	3.0						
Type (Double)	øD	D ₁	D ₂	H	H ₁	I	
WBC-S-08	0.8	M10*0.5	14	17	5	13	
WBC-S-10	1.0						
WBC-S-12	1.2						
WBC-S-15	1.5						
WBC-S-20	2.0						
WBC-S-25	2.5						

Nozzle

KSA-D



WMNC-D



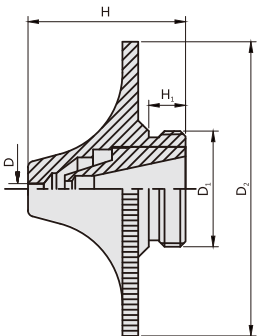
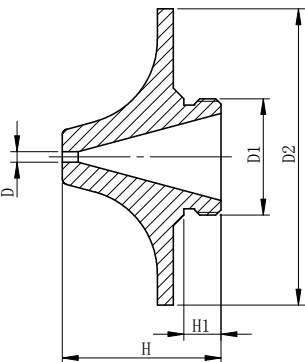
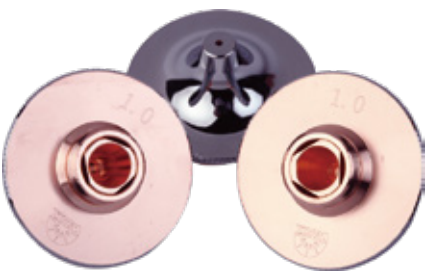
Material		Working Presser		WorkingTemperture		Installation Way	
copper		High Pressure Resistance		High Temperature		External Screw Thread Connection	
Type (Single)	øD	D ₁	D ₂	H	H ₁		
KSA-08	0.8	M5*0.5	7.5	12	2.5		
KSA-10	1.0						
KSA-12	1.2						
KSA-15	1.5						
KSA-20	2.0						
KSA-25	2.5						
KSA-30	3.0						
Type (Single)	øD	D ₁	D ₂	H	H ₁		
WMNC-D-08	0.8	5/16-38UNEF	22	20	3.5		
WMNC-D-10	1.0						
WMNC-D-12	1.2						
WMNC-D-15	1.5						
WMNC-D-20	2.0						
WMNC-D-25	2.5						

Nozzle

WHSC-JT-D



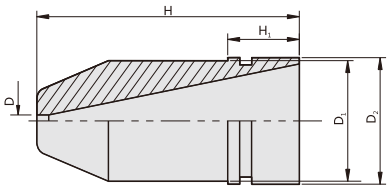
WHSC-JT-S



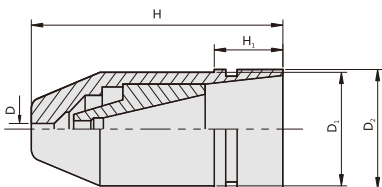
Material		Working Presser		WorkingTemperature		Installation Way	
copper		High Pressure Resistance		High Temperature		External Screw Thread Connection	
Type (Single)	øD	D ₁	D ₂	H	H ₁		
WHSC-JT-D-10	1.0	M11*0.75	28	15	3.5		
WHSC-JT-D-15	1.5						
WHSC-JT-D-20	2.0						
WHSC-JT-D-25	2.5						
WHSC-JT-D-30	3.0						
WHSC-JT-D-35	3.5						
WHSC-JT-D-40	4.0						
Type (Double)	øD	D ₁	D ₂	H	H ₁		
WHSC-JT-S-10	1.0	M11*0.75	28	15	3.5		
WHSC-JT-S-15	1.5						
WHSC-JT-S-20	2.0						
WHSC-JT-S-25	2.5						
WHSC-JT-S-30	3.0						
WHSC-JT-S-35	3.5						
WHSC-JT-S-40	4.0						

Nozzle

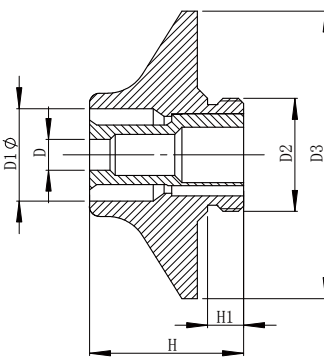
WLHB-D



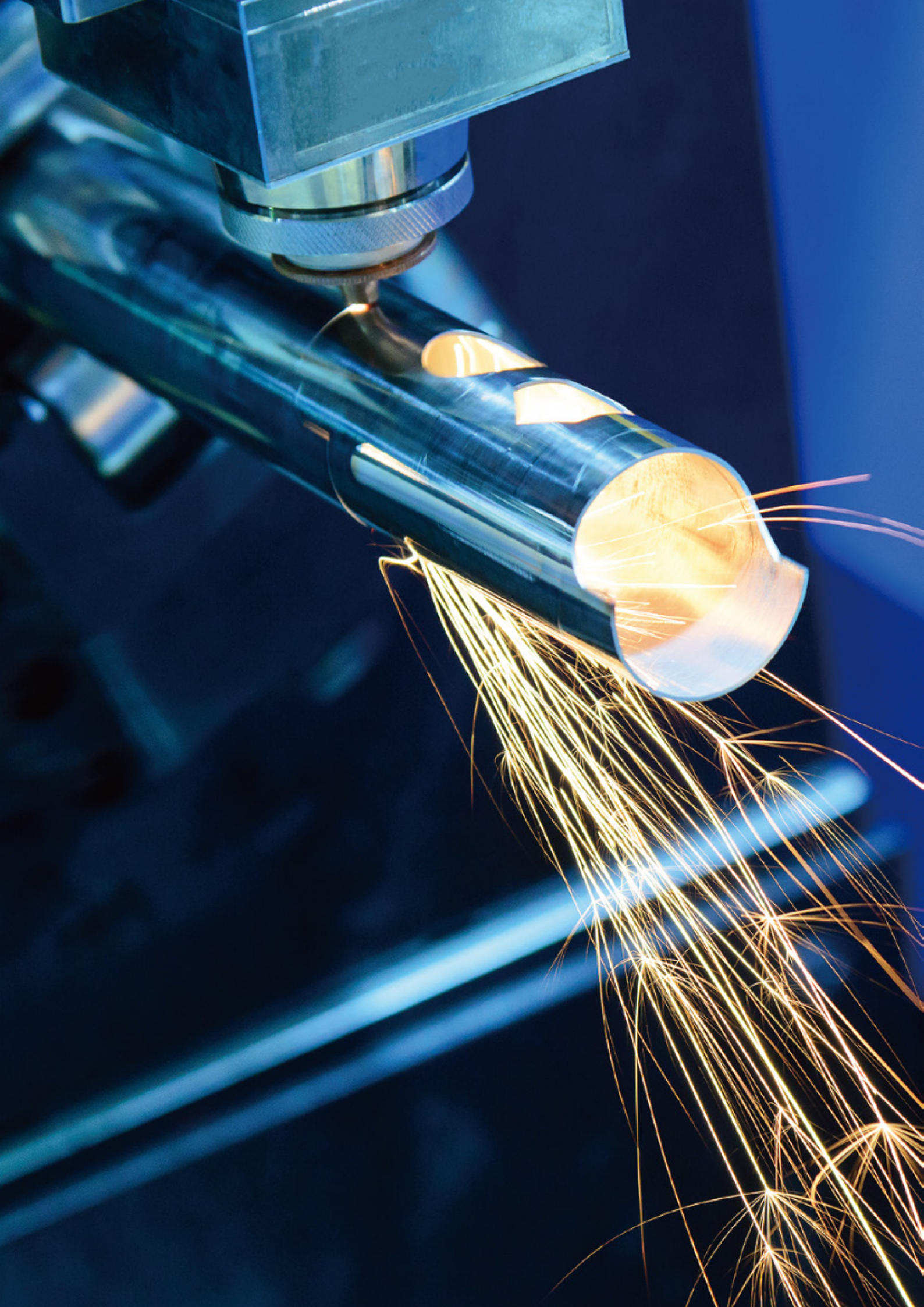
WLHB-S



EAU



Material		Working Presser		WorkingTemperature		Installation Way		
copper		High Pressure Resistance		High Temperature		External Screw Thread Connection		
Type (Single)	øD	D ₁	D ₂	H	H ₁			
WLHB-D-08	0.8	10	10.6	22	6			
WLHB-D-10	1.0							
WLHB-D-12	1.2							
WLHB-D-15	1.5							
WLHB-D-20	2.0							
WLHB-D-25	2.5							
Type (Double)	øD	D ₁	D ₂	H	H ₁			
WLHB-S-08	0.8	10	10.6	22	6			
WLHB-S-10	1.0							
WLHB-S-12	1.2							
WLHB-S-15	1.5							
WLHB-S-20	2.0							
WLHB-S-25	2.5							
Type (Double)	øD	D ₁	D ₂	D ₃	H	H ₁	M11*0.75 28 15 3.5	
EAU3011	1.1	3.0	M11*0.75	28	15	3.5		
EAU4015	1.5	4.0						
EAU5015	1.5	5.0						
EAU6015	1.5	6.0						
EAU6020	2.0	6.0						
EAU8025	2.5	8.0						
EAU9030	3.0	9.0						
EAU9040	4.0	9.0						
EAU9050	5.0	9.0						

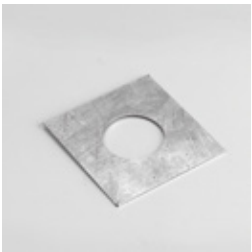


SAMPLE DISPLAY

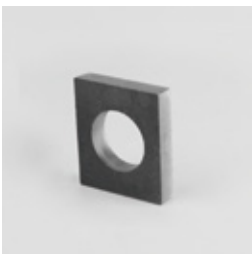
Carbon
steel



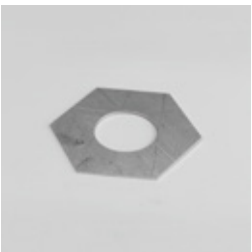
Aluminum



Thick



Thin



APPLICATION FIELD

Our products are widely used in the field of aerospace, electronics, automotive, mechanical assembly, tools, advertising and other industries.



AEROSPACE



AUTO MANUFACTURING



ELECTRIC APPLIANCE

